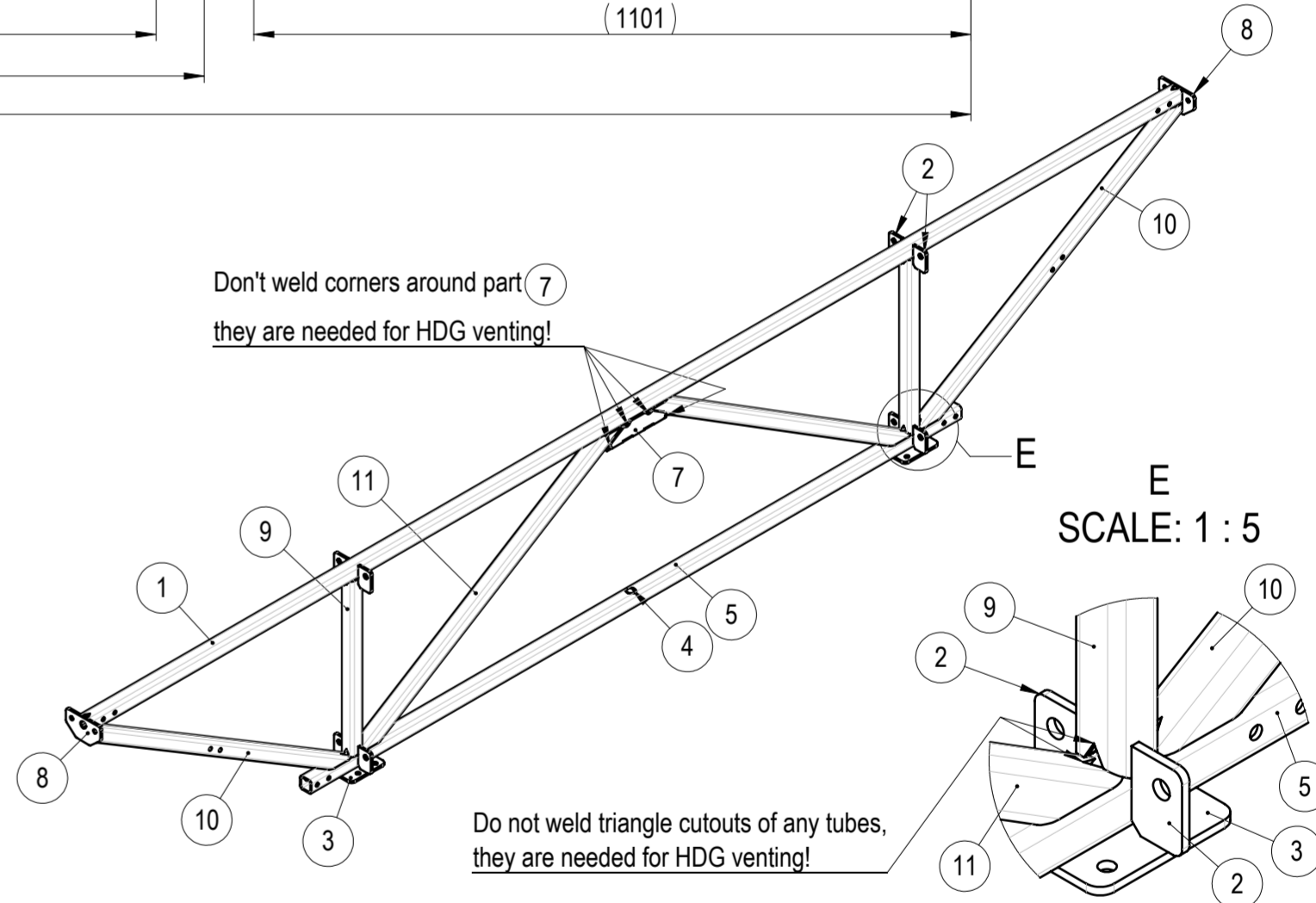
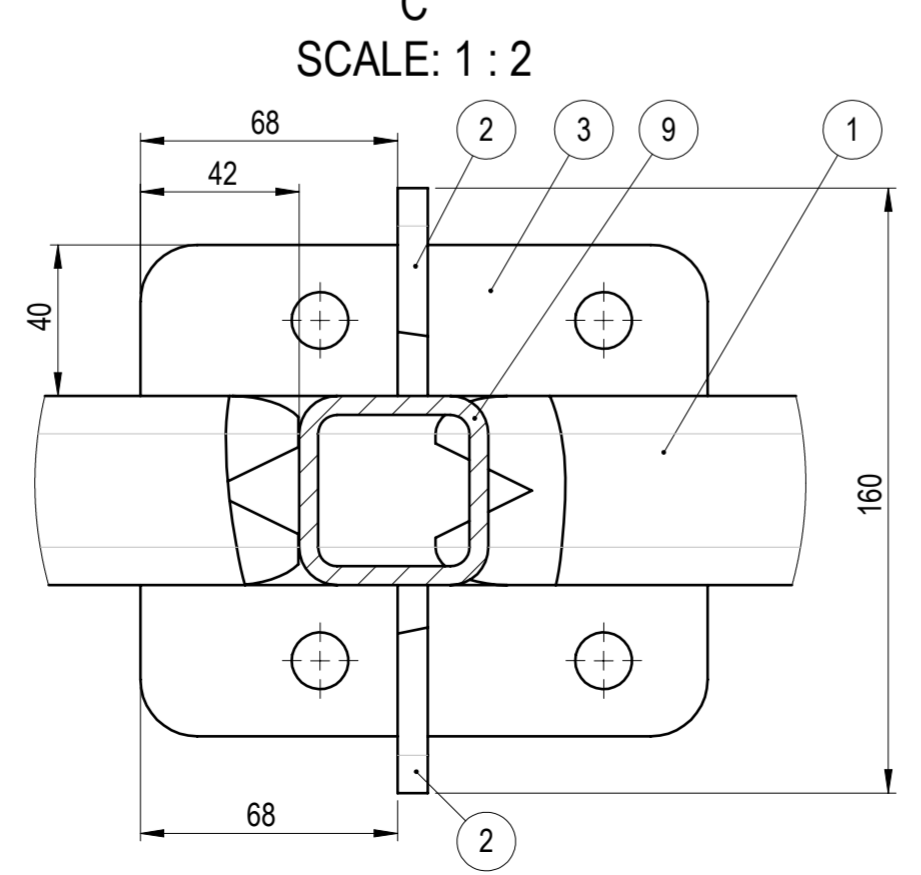
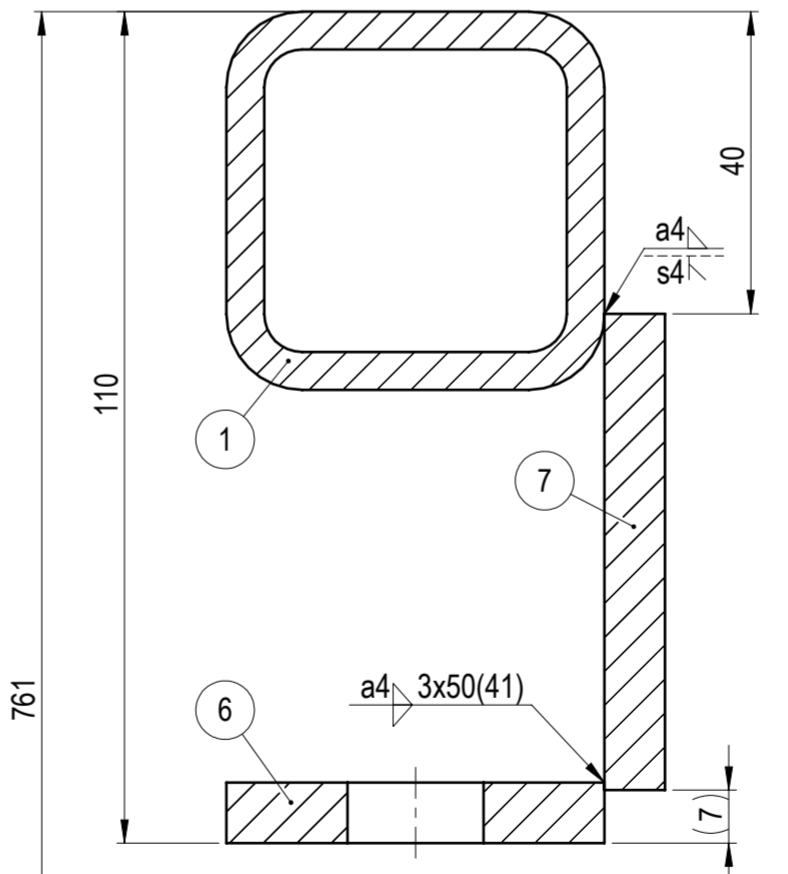
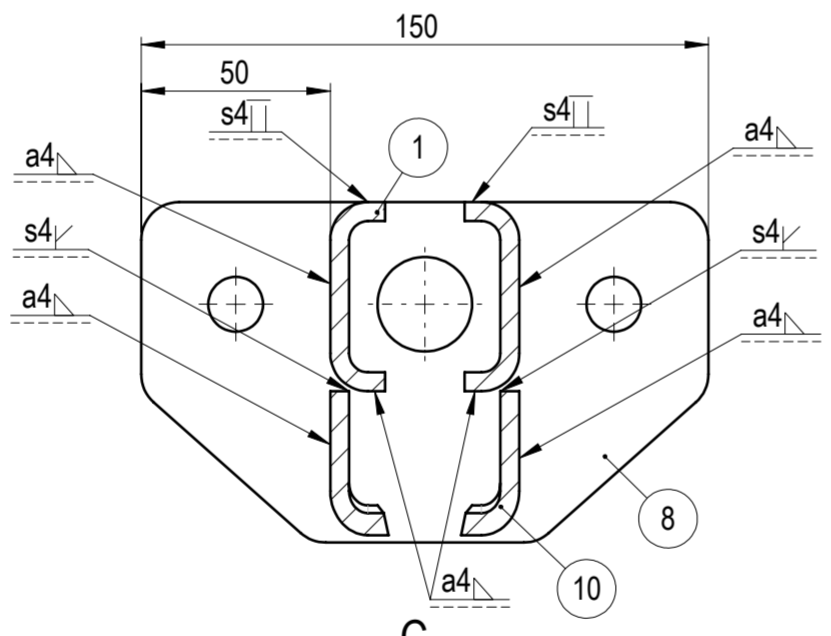
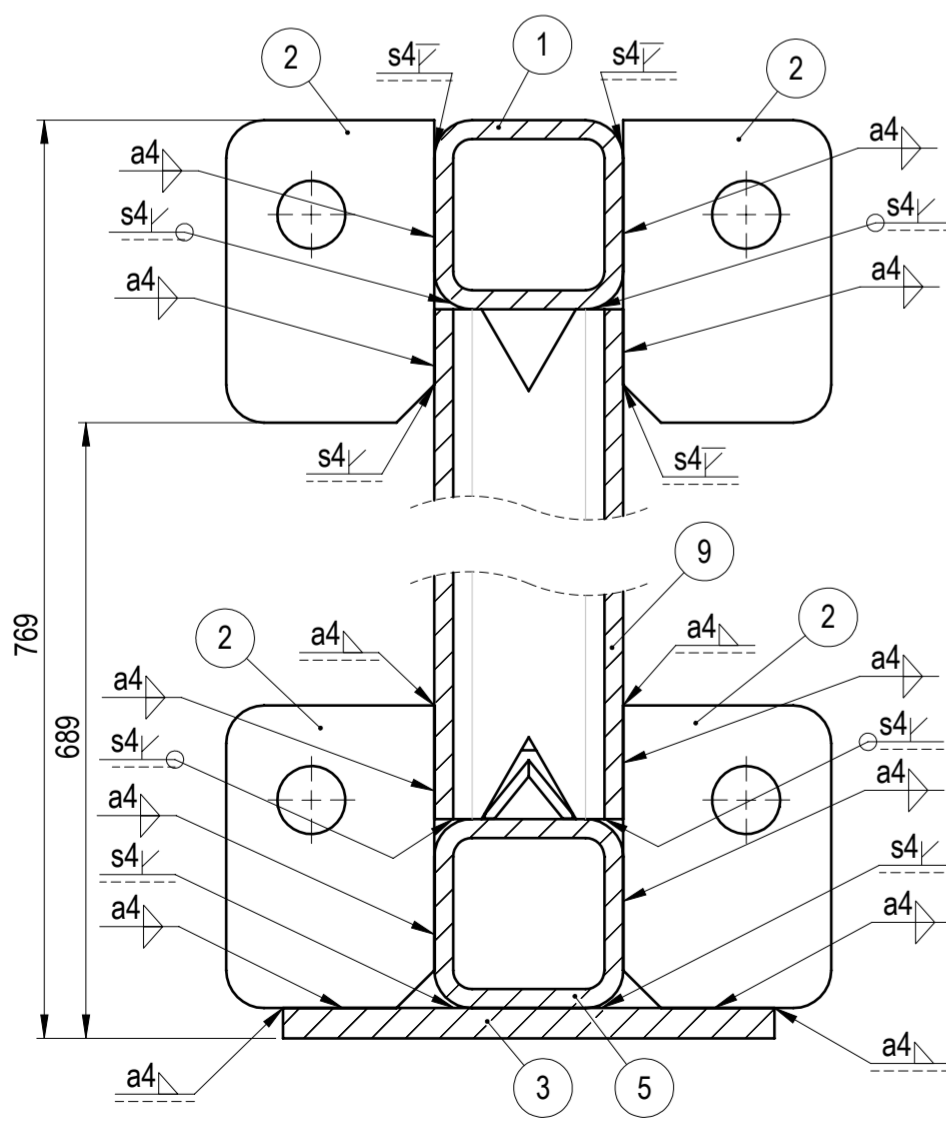


A-A
90.00°
SCALE: 1 : 2

B-B
SCALE: 1 : 2

D-D
SCALE: 1 : 1

E
SCALE: 1 : 5



NO.	PART NO	DESCRIPTION	MATERIAL	PROCESSING	REVISION	WEIGHT	QTY
1	105-09221-01	Top tube	S355J2	CND		30.81	1
2	105-09221-05	Tie link flange	S355J2	LC		0.25	8
3	105-09221-07	Bottom flange hanger frame	S355J2	LC		1.16	2
4	105-09221-11	Sleeve	S235JR	CND		0.07	1
5	105-09222-02	Bottom tube 2	S355J2	CND		18.29	1
6	105-09223-05	Middle bracket 3	S355J2	LC		0.78	1
7	105-09223-06	Back plate 3	S355J2	LC		0.68	1
8	105-09223-07	Side flange 2	S355J2	LC		0.68	2
9	105-09224-01	Vertical tube 4	S355J2	CND		4.25	2
10	105-09224-02	Outside diagonal tube 4	S355J2	CND		8.13	2
11	105-09224-03	Inside diagonal tube 4	S355J2	CND		8.09	2

WEMPS
ENGINEERING SERVICES

MATERIAL: SURFACE PROTECTION: HDG EN ISO 1461
WEIGHT: 97.280 Kg
MACHINING: ISO 2768 mK
DEBURR AND BREAK SHARP EDGES: DO NOT SCALE DRAWING
THERMAL CUTTING: ISO 9013 221
WELDING: ISO 13920 BF
REVISION: 02.06.2025
DATE: 02.06.2025
SCALE: 1:10
FORMAT: A2

Part No: 105-09224-00
Description: Hanging frame weldment 4
SHEET 1/1

Designed by: D. Dislers
Drawn by: D. Dislers
Technical ref: